

EMANUEL VON BAEYER  
CABINET

# **Lothar Osterburg Photogravures**

**IFPDA Online Viewing Room  
April 2022**

**Emanuel von Baeyer Cabinet is pleased to present photogravure works by the artist Lothar Osterburg (Braunschweig, 1961 - still active in New York).**

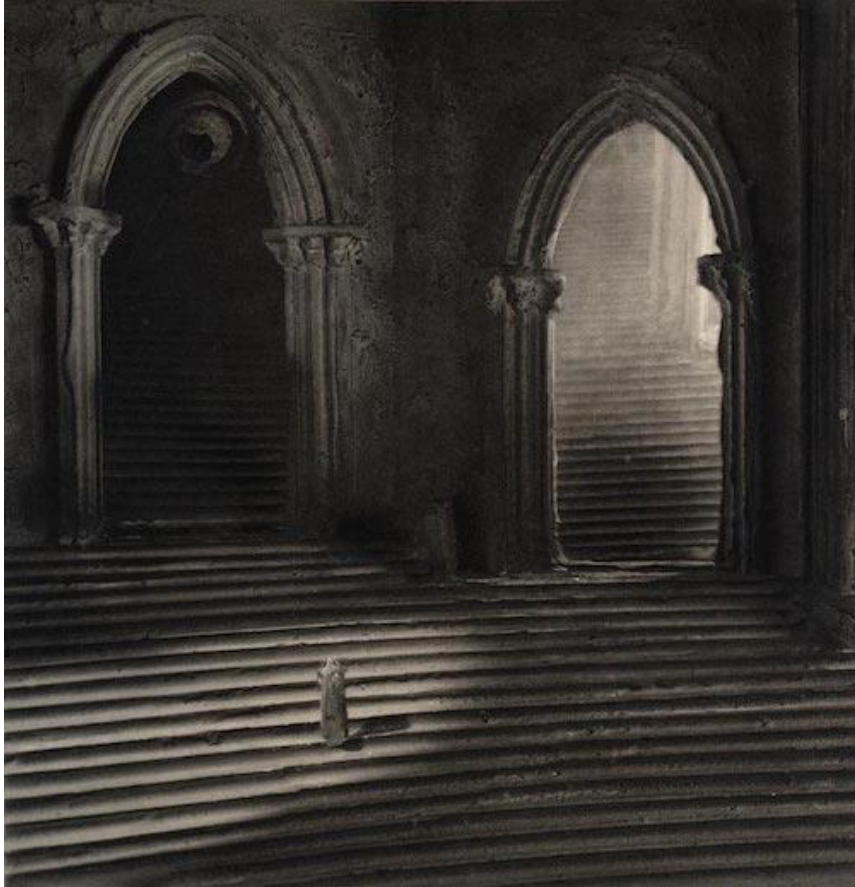
**Throughout diverse series of photogravure, Osterburg shapes imaginary sceneries, notably inspired by 18th century artist Giovanni Battista Piranesi and his *carceri d'invenzione*. Almost working as film stills, Osterburg's 'scenes' are somewhat reminiscent of silent and dark movies of the 1920s directed by Fritz Lang or Sergei Eisenstein.**

**Working from memory, he creates small-scale models out of readily available or found material, which he then proceeds to photograph through a magnifying glass or macro lens. The scenes are thus brought to lifesize dimensions and printed through the 19th century photographic process of copperplate photogravure.**

**His prints proved widely collected by public insitutions and private collectors and Lothar Osterburg is well known for his unusual and inventive technique of photogravure through which various layers of Old Masters are rejuvenated.**

**Please visit <https://evbaeyer-cabinet.com/exhibitions/lothar-osterburg/> to view the full exhibition.**

**EMANUEL VON BAEYER  
CABINET**



**Lothar Osterburg**

b. 1961, Braunschweig

**Portal 2021**

EMANUEL VON BAEYER  
CABINET

Photogravure on Hahnemuhle with Gampi Chine Colle.

Size of plate: 12.25 x 11.75 inches. Size of sheet: 17.5 x 16 inches.

Inspired by a memory of Frederick Henry Wells "A Sea of Steps", Wells Cathedral 1903.

Numbered and signed. Edition of 9.

£ 850.-

**EMANUEL VON BAEYER  
CABINET**



**Lothar Osterburg**

b. 1961, Braunschweig

**The Lobby 2021**

EMANUEL VON BAEYER  
CABINET

Photogravure on Hahnemuhle with Gampi Chine Colle.

Size of plate: 12.25 x 11.75 inches. Size of sheet: 17.5 x 16 inches.

The first attempt at large scale sculpture inside a small-scale lobby.

Edition of 7.

£ 850.-

**EMANUEL VON BAEYER  
CABINET**



**Lothar Osterburg**

b. 1961, Braunschweig

**The Livingroom 2021**

**EMANUEL VON BAEYER  
CABINET**

Photogravure on Hahnemuhle with Gampi Chine Colle.

Size of plate: 11 x 11 inches. Size of sheet: 16 x 15 inches.

Inspired by a memory of Kertesz "Chez Mondrian" 1926.

Numbered and signed. Edition of 9.

£ 700.-



**EMANUEL VON BAEYER  
CABINET**



**Lothar Osterburg**

b. 1961, Braunschweig

**Summer Cabin 2021**

**EMANUEL VON BAEYER  
CABINET**

Photogravure with color aquatint on Hahnemuhle White.

Size of plate: 10.25 x 10.25 inches. Size of sheet: 15.25 x 14.5 inches.

Numbered and signed. Edition of 7.

£ 700.-

**EMANUEL VON BAEYER  
CABINET**



**Lothar Osterburg**

b. 1961, Braunschweig

**Alchemist's Lab 2021**

**EMANUEL VON BAEYER  
CABINET**

Photogravure on Hahnemuhle with Gampi Chine Colle.

Size of plate: 10 x 15.75 inches. Size of sheet: 15 x 20 inches.

Numbered and signed. Edition of 9.

£ 800.-

**EMANUEL VON BAEYER  
CABINET**



**Lothar Osterburg**

b. 1961, Braunschweig

**Grand Concourse 2021**

EMANUEL VON BAEYER  
CABINET

Photogravure on Somerset soft white.

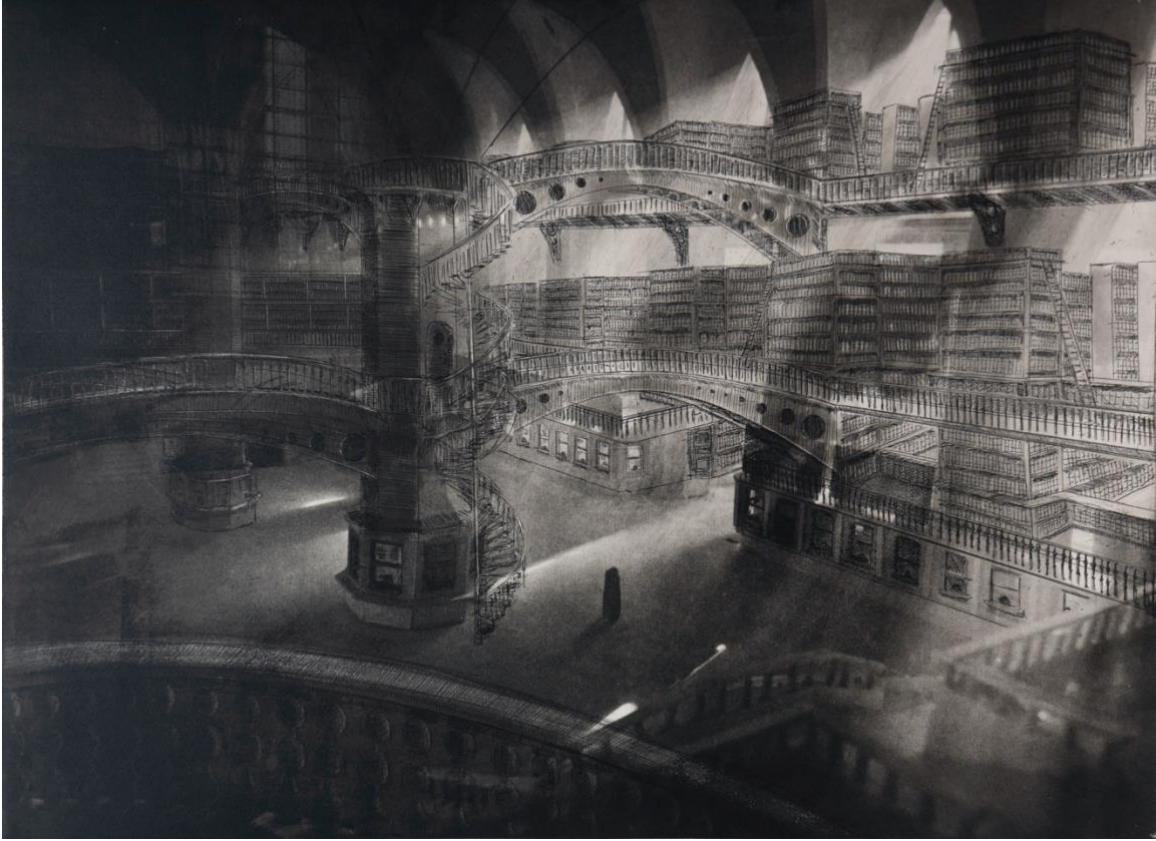
Size of plate: 15.75 x 21.75 inches. Size of sheet: 20.75 x 25.75 inches.

First state of the print "Grand Station Library".

Numbered and signed. Edition of 12.

£ 1,200.-

**EMANUEL VON BAEYER  
CABINET**



**Lothar Osterburg**

b. 1961, Braunschweig

**Grand Central Library 2021**

EMANUEL VON BAEYER  
CABINET

Photogravure with hard ground etching, spit bite and burnishing on Somerset soft white.

Size of plate: 15.75 x 21.75 inches. Size of sheet: 20.75 x 25.75 inches.

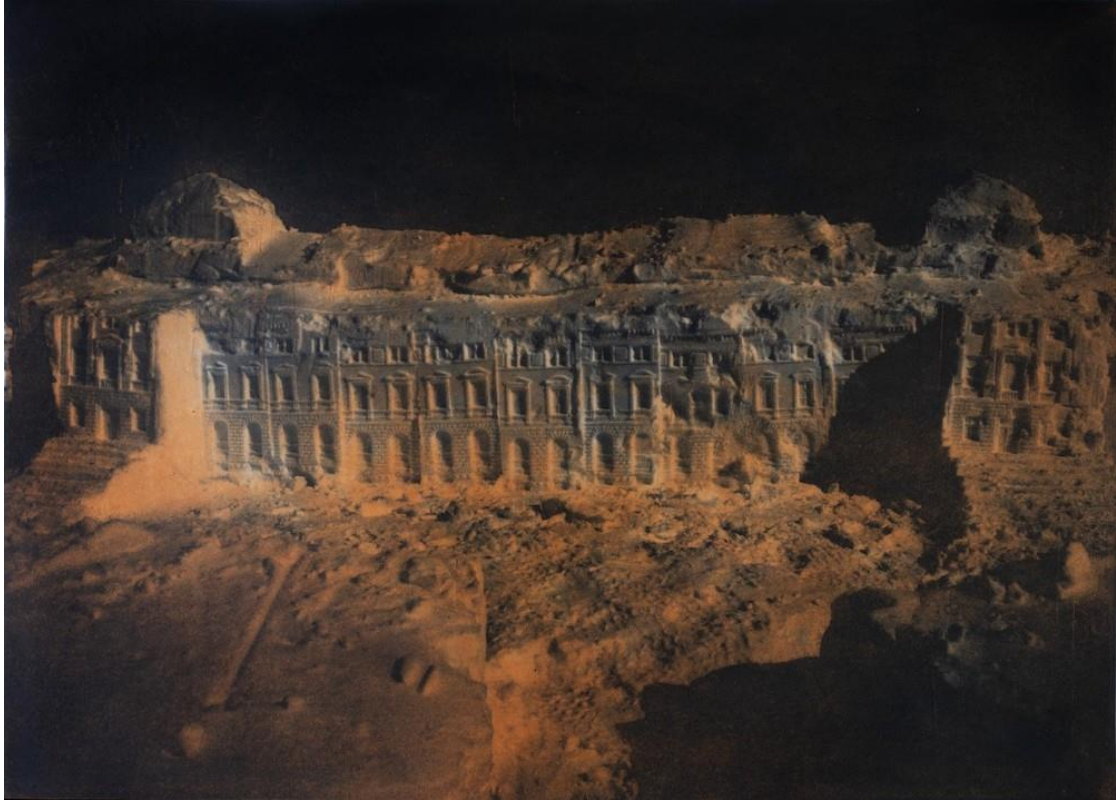
Realization of the artist's dream to turn the grand concourse of New York's Grand Central Station into a library. This is the second state of the print "Grand Concourse".

Numbered and signed. Edition of 12.

£ 1,200.-



**EMANUEL VON BAEYER  
CABINET**



**Lothar Osterburg**

b. 1961, Braunschweig

**Mein Traum vom HAUM 2021**

**EMANUEL VON BAEYER  
CABINET**

Photogravure with color aquatint on Hahnemuhle White.

Size of plate: 15.5 x 21.5 inches. Size of sheet: 21 x 26 inches.

Model built of snow in January 2021.

Numbered and signed. Edition of 12.

£ 950.-

EMANUEL VON BAEYER  
CABINET



**Lothar Osterburg**

b. 1961, Braunschweig

**Vermillion Plains 2021**

EMANUEL VON BAEYER  
CABINET

Photogravure on Somerset white with Gampi Chine Colle.

Size of plate: 11 x 26.75 inches. Size of sheet: 16 x 30.75 inches.

Set up on location underneath northern Arizona's Vermillion Cliffs.

Numbered and signed. Edition of 7.

£ 1,200.-

**EMANUEL VON BAEYER  
CABINET**



**Lothar Osterburg**

b. 1961, Braunschweig

**Reading Nook 2021**

**EMANUEL VON BAEYER  
CABINET**

Photogravure on Hahnemuhle.

Size of plate: 5 x 7 inches. Size of sheet: 10 x 11 inches.

Numbered and signed. Edition of 25.

£ 350.-