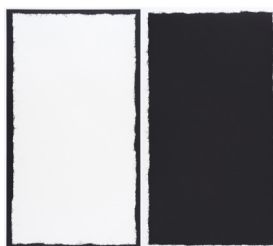


## SUMMER READING

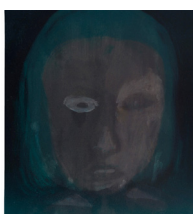
May 24 - August 16, 2024



JARVIS BOYLAND  
*California Interior #3, 2023 (23-318)*  
Twelve-color lithograph  
Paper Size: 39 3/4 x 26 1/8 inches  
Paper Type: Soft white Somerset satin  
Collaborating Printers: Valpuri Remling and Julia Marco  
Edition of 30  
\$3,000\*



SONYA CLARK  
*Edges and Margins, 2023 (23-304-304a)*  
One-color lithograph, diptych  
Paper Size: 27 x 15 1/8 inches each panel  
Paper Type: Arches 88  
Collaborating Printer(s): Valpuri Remling and Julia Marco  
Edition of 20  
\$6,000\* (only sold as a diptych)



MAJA RUZNIC  
*Shadow 7, 2021 (21-501.5)*  
Monotype  
Paper Size: 19 3/4 x 18 inches  
Paper Type: Thai Kozo/white Arches Cover  
Collaborating Printer(s): Valpuri Remling and Alyssa Ebinger  
Edition of 1  
\$3,000\*



HENNI ALFTAN  
*The Next Day, 2021 (21-314)*  
Four-color lithograph  
Paper Size: 33 x 45 1/2 inches  
Paper Type: White Rives BFK  
Collaborating Printer(s): Valpuri Remling and Lindsey Sigmon  
Edition of 30  
\$8,000\*



HENNI ALFTAN  
*Dancing Barefoot, 2021 (21-309)*  
Five eight-color lithographs sold as a set and to be displayed in exact sequence  
Paper Size: 26 3/4 x 29 1/4 inches  
Paper Type: Newsprint grey Somerset velvet  
Collaborating Printer(s): Valpuri Remling and Lindsey Sigmon  
Edition of 30  
\$18,000\* (Sold as a set of five, not individually)



HENNI ALFTAN  
*Dancing Barefoot, 2021 (21-309a)*  
Five eight-color lithographs sold as a set and to be displayed in exact sequence  
Paper Size: 26 13/16 x 25 inches  
Paper Type: Newsprint grey Somerset velvet  
Collaborating Printer(s): Valpuri Remling and Lindsey Sigmon  
Edition of 30



HENNI ALFTAN  
*Dancing Barefoot, 2021 (21-309b)*  
Five eight-color lithographs sold as a set and to be displayed in exact sequence  
Paper Size: 26 15/16 x 27 7/16 inches  
Paper Type: Newsprint grey Somerset velvet  
Collaborating Printer(s): Valpuri Remling and Lindsey Sigmon  
Edition of 30



HENNI ALFTAN  
*Dancing Barefoot, 2021 (21-309c)*  
Five eight-color lithographs sold as a set and to be displayed in exact sequence  
Paper Size: 26 3/4 x 26 3/8 inches  
Paper Type: Newsprint grey Somerset velvet  
Collaborating Printer(s): Valpuri Remling and Lindsey Sigmon  
Edition of 30



HENNI ALFTAN  
*Dancing Barefoot, 2021 (21-309d)*  
Five eight-color lithographs sold as a set and to be displayed in exact sequence  
Paper Size: 26 15/16 x 27 3/8 inches  
Paper Type: Newsprint grey Somerset velvet  
Collaborating Printer(s): Valpuri Remling and Lindsey Sigmon  
Edition of 30



JEFFREY GIBSON  
*Mighty Real*, 2021 (21-307)  
 Four-color lithograph  
 Paper Size: 36 11/16 x 25 1/4 inches  
 Paper Type: Soft white Somerset velvet  
 Collaborating Printer(s):Valpuri Remling and Lindsey Sigmon  
 Edition of 20  
 \$12,500\*



MATTHEW SHLIAN  
*S&S&S&S*, 2023 (23-309.13)  
 A one run, 2-color blend monotype printed on an offset press.  
 Paper Size: 18 x 18 inches  
 Paper Type: Solar white Classic Crest smooth  
 Collaborating Printer(s):Valpuri Remling and Julia Marco  
 Edition of 15  
 \$2,800\*



KOAK  
*High Noon*, 2022 (22-306)  
 Nine-color lithograph  
 Paper Size: 22 1/2 x 34 1/4 inches  
 Paper Type: Antique white Somerset velvet  
 Collaborating Printer(s):Valpuri Remling and Lindsey Sigmon  
 Edition of 20  
 \$2,800\*



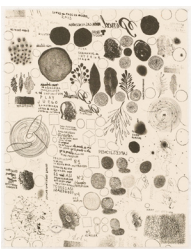
MATTHEW SHLIAN  
*S&S&S&S*, 2023 (23-309a.12)  
 A three-dimensional, one run, 3-color blend monotype printed on an offset press.  
 Paper Size: 18 x 18 inches  
 Paper Type: Solar white Classic Crest smooth  
 Collaborating Printer(s):Valpuri Remling and Julia Marco  
 \$2,800\*



ELLEN BERKENBLIT  
*Night Peonies*, 2022 (22-303)  
 Eleven-color lithograph  
 Paper Size: 25 15/16 x 36 7/8 inches  
 Paper Type: gray Rives BFK  
 Collaborating Printer(s):Valpuri Remling and Lindsey Sigmon  
 Edition of 20  
 \$3,000\*



MATTHEW SHLIAN  
*Some Caterpillars Stay Caterpillars 38*, 2023(23-308a.6)  
 A three-dimensional, one run, 3-color blend monotype printed on an offset press.  
 Paper Size: 18 x 18 inches  
 Paper Type: Solar white Classic Crest smooth  
 Collaborating Printer(s):Valpuri Remling and Julia Marco  
 \$2,800\*



JOSÉ ANTONIO SUÁREZ LONDOÑO  
*Untitled*, 2015 (15-336)  
 Single-color lithograph with chine collé  
 Paper Size: 12 x 9 1/2 inches  
 Paper Type:Thai Kozo and Warm white Revere suede  
 Collaborating Printer(s): Bill Lagattuta,Valpuri Remling, Mike Feijen, and Perry Obee  
 Edition of 20  
 \$900\*



MATTHEW SHLIAN  
*Some Caterpillars Stay Caterpillars 38*, 2023 (23-308.5)  
 A three-dimensional, one run, 3-color blend monotype printed on an offset press.  
 Paper Size: 18 x 18 inches  
 Paper Type: Solar white Classic Crest smooth  
 Collaborating Printer(s):Valpuri Remling and Julia Marco  
 \$2,800\*



JOSÉ ANTONIO SUÁREZ LONDOÑO  
*Untitled*, 2015 (15-335)  
 Single-color lithograph with chine collé  
 Paper Size: 12 x 9 1/2 inches  
 Paper Type:Thai Kozo and Warm white Revere suede  
 Collaborating Printer(s): Bill Lagattuta,Valpuri Remling, Mike Feijen, and Perry Obee  
 \$900\*



BRIAN REA  
*BEAUTY*, 2022 (22-317)  
 One-color lithograph  
 Paper Size: 28 x 35 inches  
 Paper Type: Soft white somerset satin  
 Collaborating Printer(s):Valpuri Remling  
 Edition of 30  
 \$1,000\*



PAULA WILSON  
*Sole Spotted Moth*, 2021 (21-303)  
Single-color lithograph with chine collé  
Paper Size: 10 x 8 inches  
Paper Type: Thai Kozo/white Arches Cover  
Collaborating Printer(s): Valpuri Remling  
and Alyssa Ebinger  
Edition of 20  
\$500\*



PAULA WILSON  
*Western Flare Moth*, 2021 (21-303c)  
Single-color lithograph with chine collé  
Paper Size: 10 x 8 inches  
Paper Type: Thai Kozo/white Arches Cover  
Collaborating Printer(s): Valpuri Remling  
and Alyssa Ebinger  
Edition of 20  
\$500\*

 Tamarind  
INSTITUTE

Kylee Aragon Wallis, Gallery Director  
tamarind@unm.edu  
505.277.3901

\*Price for unframed work(s). All prices subject to change.