

HIRAM BUTLER GALLERY
4520 BLOSSOM ST. HOUSTON, TX 77007

PRINTS

22 January, 2021 - 27 February, 2021



James Turrell
Gard (First Light), 1990
Aquatint on Zerkall
42 7/16 x 29 13/16 inches ed. 17/30
\$25,000



James Turrell
Fargo (First Light), 1989-90
Aquatint on Zerkall
42 3/8 x 29 3/4 inches ed. 25/30
\$25,000



James Turrell
Raethro (First Light), 1990
Aquatint on Zerkall
42 7/16 x 29 13/16 inches ed. 12/30
\$25,000



Sol Lewitt
Forms Derived from a Cube (Colors Superimposed), Plate #06, 1991
Color screenprint
32 x 32 inches ed. 8/35
\$5,000



Sol LeWitt
Forms Derived from a Cube (Colors Superimposed), Plate #05, 1991
Color screenprint
32 x 32 inches ed. 8/35
\$5,000



Sol Lewitt
Forms Derived from a Cube (Colors Superimposed), Plate #03, 1991
Color screenprint
32 x 32 inches ed. 8/35
\$5,000



Barnett Newman
Untitled Etching #1, 1969
Etching and aquatint, on J. Green paper
19 x 29 3/4 inches ed. 17/27
\$100,000



Kate Shepherd
Still Gallery, View Between, 4 Reds, Thread Line, 2001
Screenprint on museum board
34 1/4 x 43 1/2 inches ed. 21/45
\$6,000



Mary Weatherford
The Robot, 2018
Spit bite aquatint on gampi paper chine collé
35 1/4 x 28 1/2 inches ed. 11/25
\$4,200

HIRAM BUTLER GALLERY
4520 BLOSSOM ST. HOUSTON, TX 77007

PRINTS

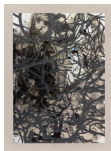
22 January, 2021 - 27 February, 2021



Sam Francis
Coldest Stone, 1960
Lithograph in colors on Rives BFK paper
25 x 35 inches ed. 27/65
\$6,000



Tara Donovan
Untitled, 2009
Ink on paper
51 7/8 x 42 5/8 inches
\$28,000



Jim Hodges
Finally, 2017
Intaglio, screen print, digital pigment printing, chine collé, and a hand cut and folded
holographic foil element
43 x 33 inches ed. 28
\$17,000



Ellsworth Kelly
Blue/Black/Réd/Green, 2001
4-color lithograph
25 x 88 inches ed. 24/45
\$65,000